

# Exploring the link: Maternal childhood trauma, adult attachment styles, and autism spectrum disorders in early childhood

NIHAN ELİF YAPICI<sup>1</sup>, DR. SONGÜL DERİN<sup>2</sup>

<sup>1</sup> Faculty of Medicine, Bezmialem Vakıf University, Istanbul, Turkey

<sup>2</sup> Department of Child and Adolescent Psychiatry, Bezmialem Vakıf University, Istanbul, Turkey

# Table of Contents

Introduction

---

Purpose

---

Methods

---

Results

---

Conclusions

# INTRODUCTION

## Autism Spectrum Disorders (ASD)

Neurobehavioral disorder characterized by deficits in

1

social skills and  
communication  
development,

2

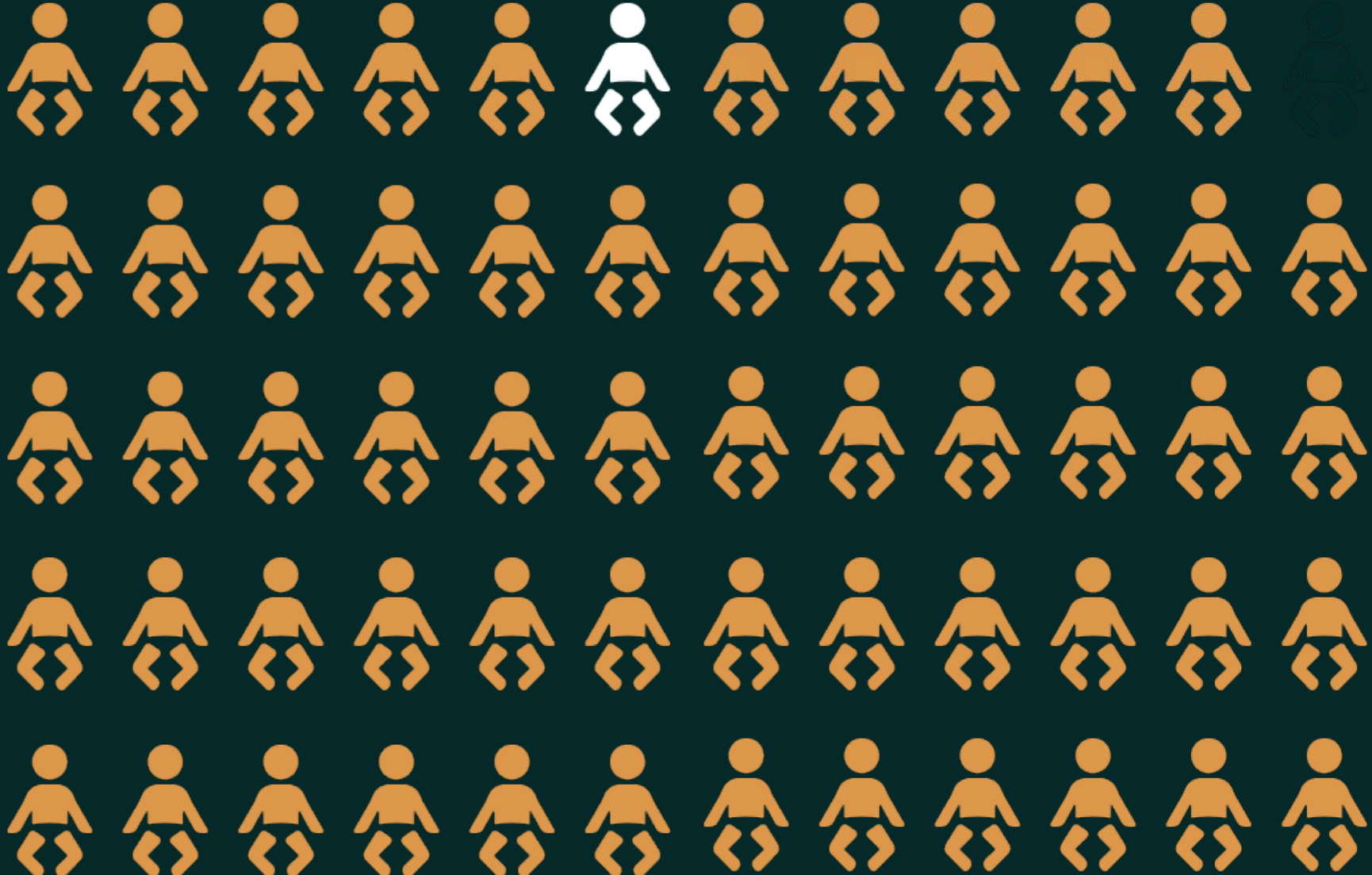
stereotypical  
movements

3

restricted areas of  
interest.



# PREVALENCE



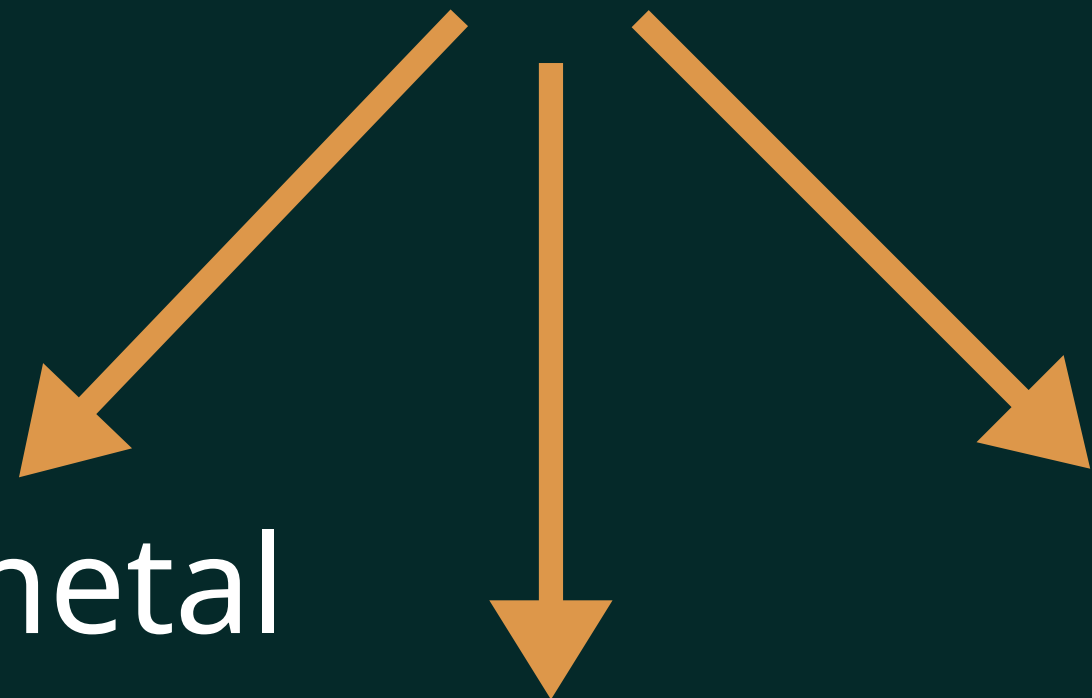
1 in 54 child



# ETIOLOGY

---

Environmental



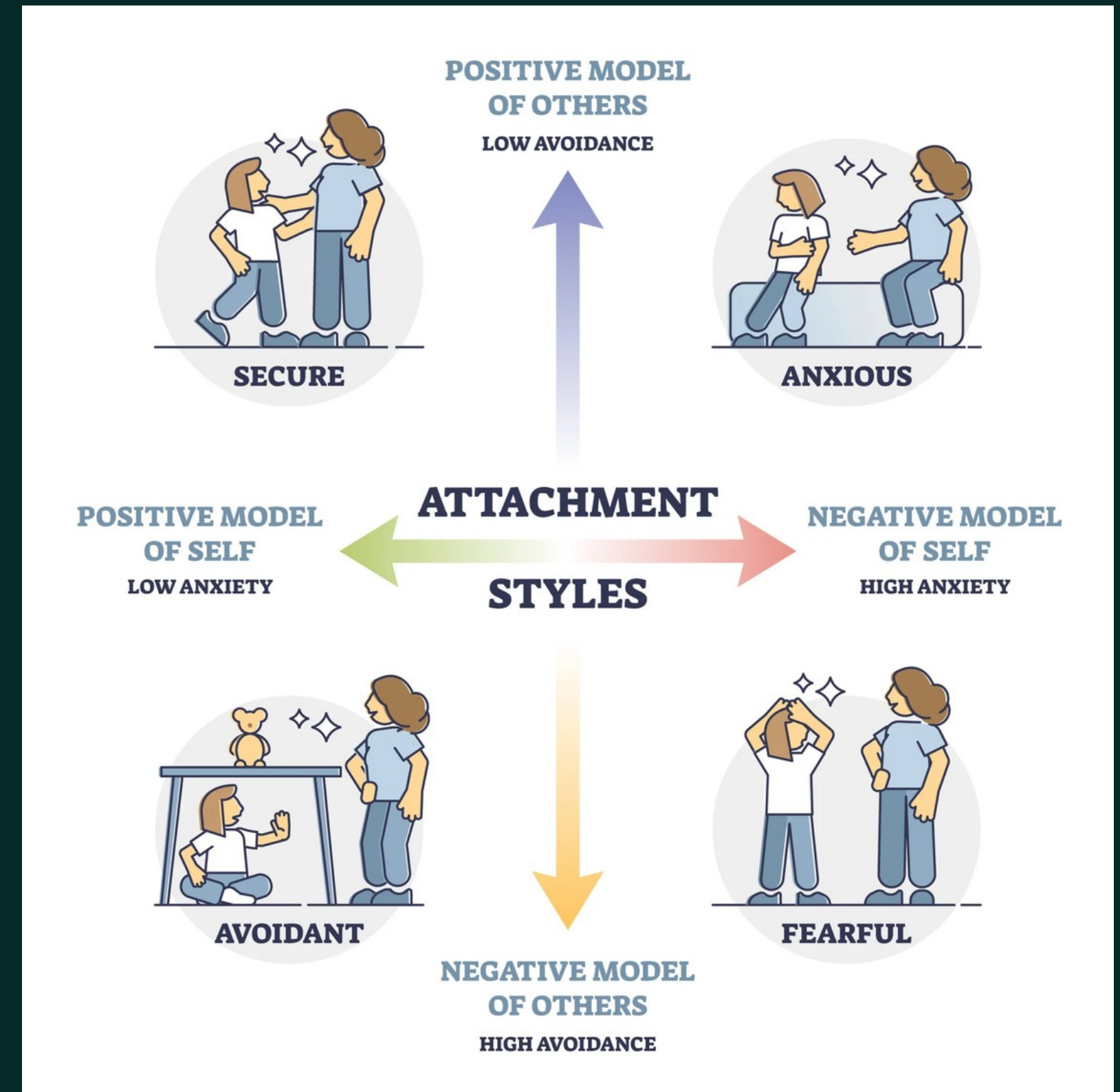
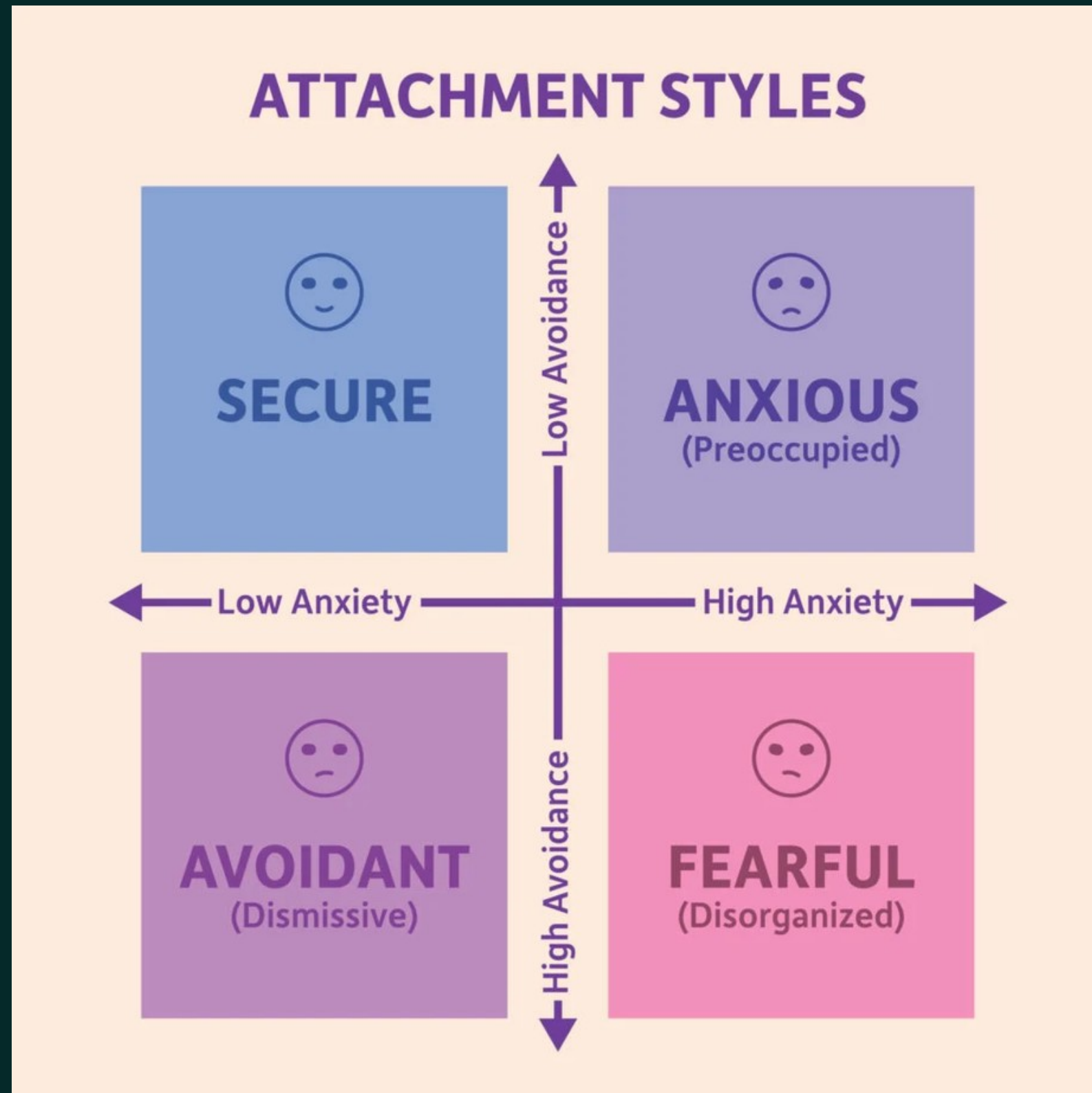
??

Genetic

C



# ATTACHMENT STYLES



# PURPOSE

## Literature findings:

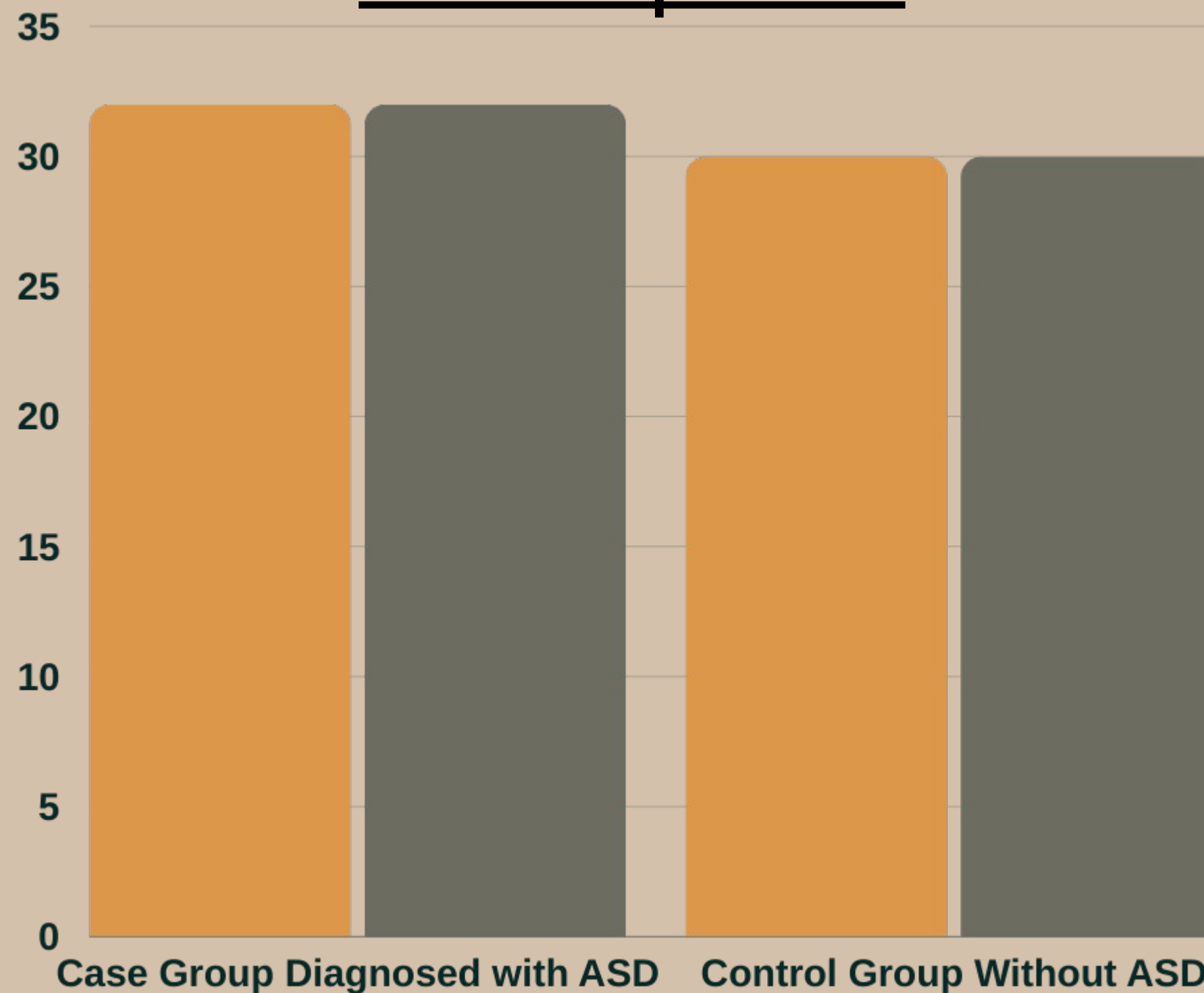
- suggested a link between early maternal influences and a autism spectrum disorder (ASD) in children
- observed that women who have faced childhood abuse may have poor attachment styles

However, the potential association between a mother's history of abuse and her attachment style, and the occurrence of ASD in her children, remains unclear.

# METHODS



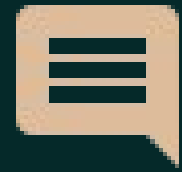
## Participants



\*0-5 years old children and their mothers



# METHODS



## Measures

- Childhood Autism Rating Scale (CARS)
- Childhood Trauma Questionnaire (CTQ)
- Relationship Scales Questionnaire (RSQ)
- Demographic Information

# Results



- Mothers with **preoccupied attachment** were more likely to have a child with ASD ( $B = 1.87$ ,  $p = 0.023$ ), after controlling maternal childhood trauma and socioeconomic status.

	Control Group (n=30)	Case Group (n=32)	p value
Secure Attachment	4.08	3.45	0.007
Fearful Attachment	3.54	3.80	0.301
Dismissive Attachment	4.19	4.86	0.019
Preoccupied Attachment	3.16	4.05	<0.001

# Conclusions

This suggests that maternal preoccupied attachment styles are more likely to be observed in children with ASD. Therefore, clinicians treating children with ASD should be cognizant of the potential for preoccupied attachment in mothers, as this may impact treatment approaches and outcomes.



Thank you for listening